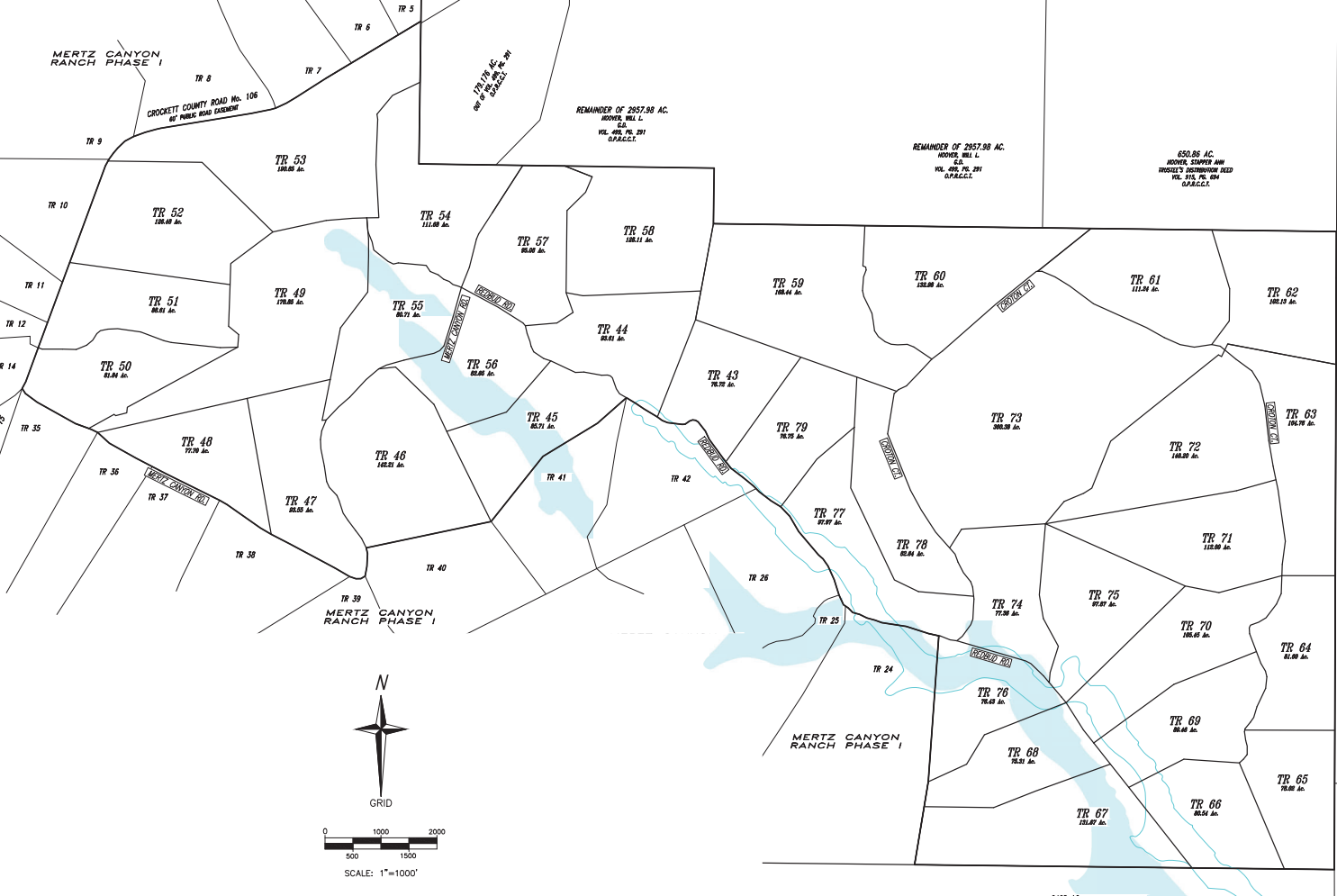


MERTZ CANYON RANCH PHASE I



CROCKETT COUNTY ROAD No. 106
60' PUBLIC ROAD EASEMENT

REMAINDER OF 2957.98 AC.
MOORE, WILL L.
S.P.A.C.C.T.

REMAINDER OF 2957.98 AC.
MOORE, WILL L.
S.P.A.C.C.T.

650.86 AC.
MOORE, SHARPE AND
HUSSELL'S SUCCESSION TRUST
S.P.A.C.C.T.

TR 53
138.88 Ac.

TR 52
138.88 Ac.

TR 54
111.88 Ac.

TR 57
98.88 Ac.

TR 58
138.11 Ac.

TR 59
138.88 Ac.

TR 60
138.88 Ac.

TR 61
111.88 Ac.

TR 62
182.19 Ac.

TR 51
88.81 Ac.

TR 49
178.88 Ac.

TR 55
88.79 Ac.

TR 44
88.81 Ac.

TR 43
78.78 Ac.

TR 79
78.78 Ac.

TR 73
308.88 Ac.

TR 63
194.79 Ac.

TR 50
88.81 Ac.

TR 56
88.81 Ac.

TR 45
88.79 Ac.

TR 42

TR 77
87.87 Ac.

TR 78
88.81 Ac.

TR 72
188.88 Ac.

TR 71
118.88 Ac.

TR 48
77.78 Ac.

TR 46
188.81 Ac.

TR 41

TR 26

TR 25

TR 24

TR 74
77.78 Ac.

TR 75
97.87 Ac.

TR 70
188.88 Ac.

TR 64
88.81 Ac.

MERTZ CANYON RANCH PHASE I

MERTZ CANYON RANCH PHASE I

TR 76
78.88 Ac.

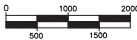
TR 69
88.81 Ac.

TR 68
78.81 Ac.

TR 65
78.88 Ac.

TR 67
138.88 Ac.

TR 66
88.81 Ac.



SCALE: 1"=1000'