

COOPER TEXAS REAL ESTATE HOLDINGS, LLC, 174.77 ACRES VOL. 393, PG. 478 O.P.R.E.C.T.

R.E. MENOTTI 152.00 ACRES VOL. 282, PG. 261 O.P.R.E.C.T.

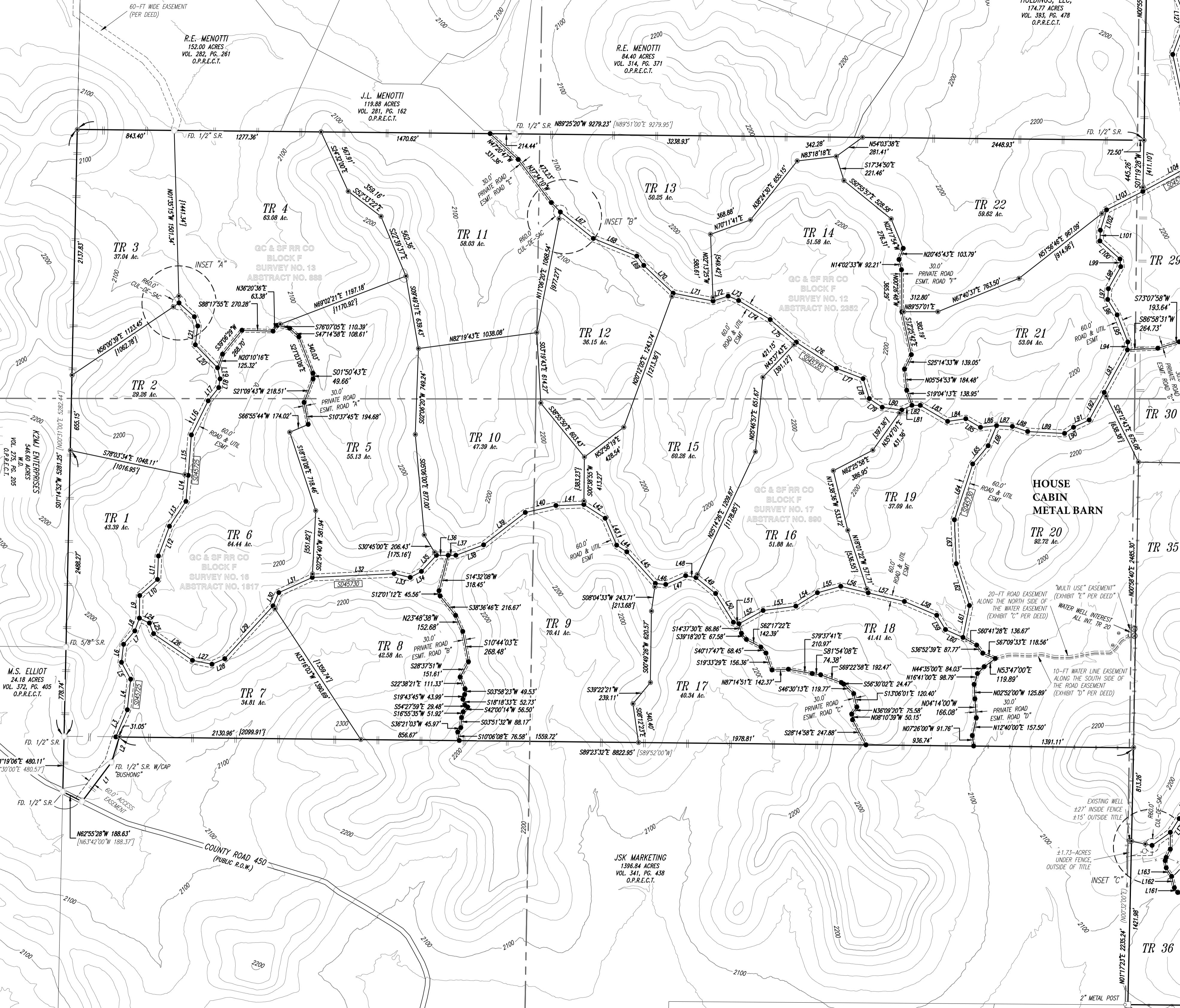
R.E. MENOTTI 84.40 ACRES VOL. 314, PG. 371 O.P.R.E.C.T.

J.L. MENOTTI 119.88 ACRES VOL. 281, PG. 162 O.P.R.E.C.T.

K2M ENTERPRISES 546.60 ACRES VOL. 275, PG. 205 O.P.R.E.C.T.

M.S. ELLIOT 24.18 ACRES VOL. 372, PG. 405 O.P.R.E.C.T.

JSK MARKETING 1396.84 ACRES VOL. 341, PG. 438 O.P.R.E.C.T.



TR 3 37.04 Ac.

TR 4 63.08 Ac.

TR 11 58.03 Ac.

TR 13 50.25 Ac.

TR 14 51.58 Ac.

TR 22 58.62 Ac.

TR 29

TR 2 29.26 Ac.

TR 5 55.13 Ac.

TR 10 47.39 Ac.

TR 15 60.28 Ac.

TR 21 53.04 Ac.

TR 30

TR 1 43.39 Ac.

TR 6 64.44 Ac.

TR 8 42.58 Ac.

TR 9 70.41 Ac.

TR 16 51.88 Ac.

TR 19 37.09 Ac.

TR 20 92.72 Ac.

TR 35

TR 7 34.81 Ac.

TR 17 40.34 Ac.

TR 18 41.41 Ac.

TR 36

GC & SF RR CO BLOCK F SURVEY NO. 13 ABSTRACT NO. 888

GC & SF RR CO BLOCK F SURVEY NO. 12 ABSTRACT NO. 2352

GC & SF RR CO BLOCK F SURVEY NO. 16 ABSTRACT NO. 1817

GC & SF RR CO BLOCK F SURVEY NO. 17 ABSTRACT NO. 890

HOUSE CABIN METAL BARN

20-FT ROAD EASEMENT ALONG THE NORTH SIDE OF THE WATER EASEMENT (EXHIBIT "C" PER DEED)

"MULTI USE" EASEMENT (EXHIBIT "E" PER DEED) WATER WELL INTEREST ALL INT. TR 20

10-FT WATER LINE EASEMENT ALONG THE SOUTH SIDE OF THE ROAD EASEMENT (EXHIBIT "D" PER DEED)

EXISTING WELL ±27' INSIDE FENCE ±15' OUTSIDE TITLE

±1.73-ACRES UNDER FENCE, OUTSIDE OF TITLE

INSET "C"

2" METAL POST

