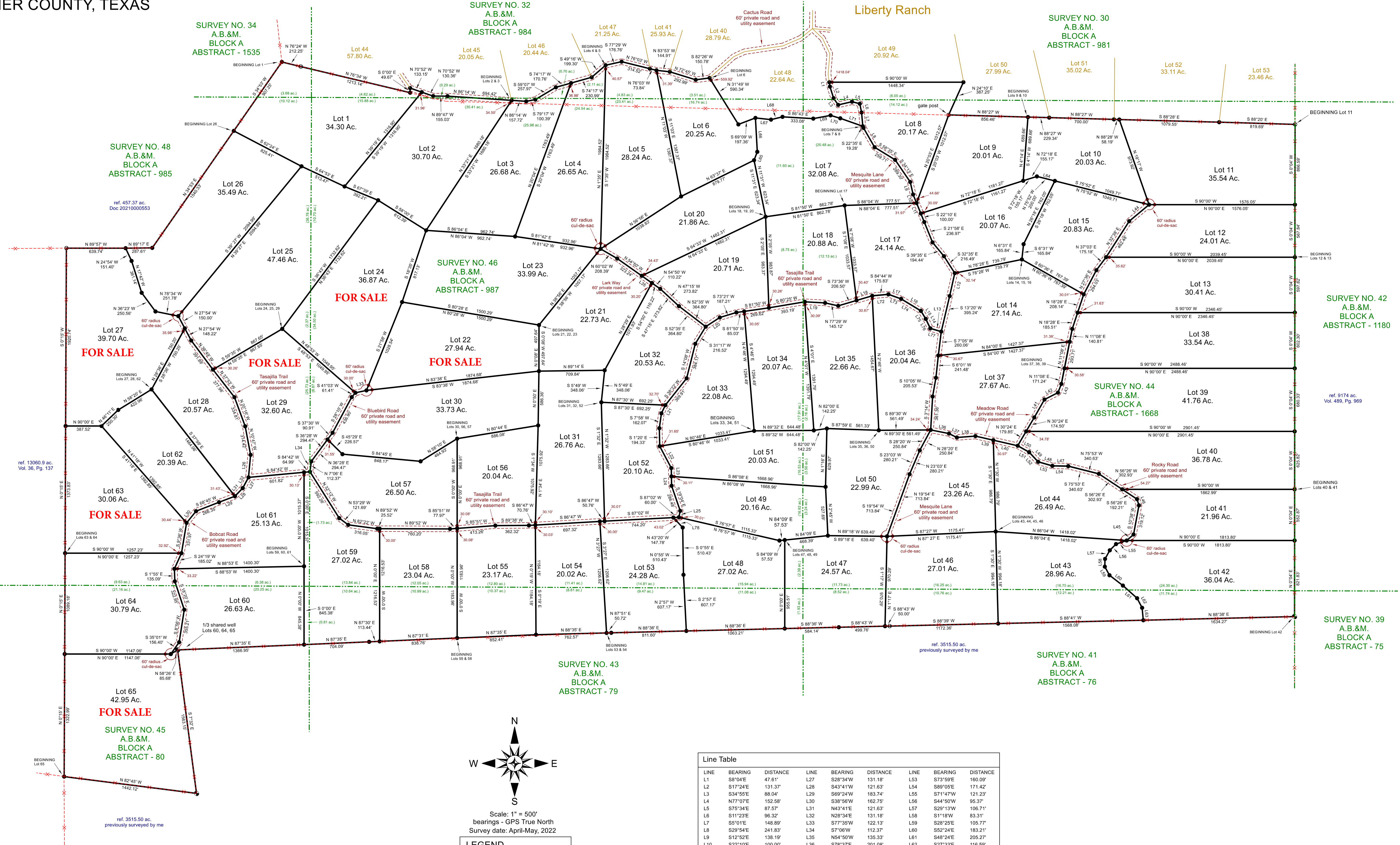
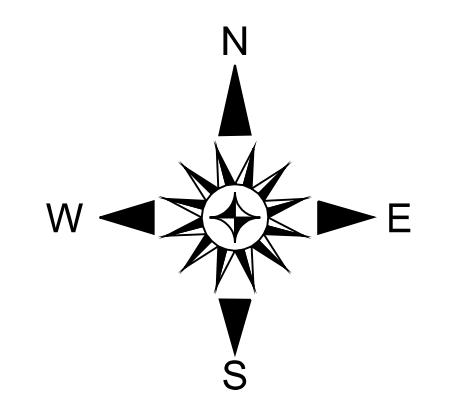


BRANDON RANCH SCHLEICHER COUNTY, TEXAS



PLAT SHOWING:
Sixty-five (65) Lots, known as Brandon Ranch, an unrecorded subdivision in Schleicher County, Texas. Subject tracts lying and being situated in Survey Nos. 30, 32, 34, 41, 43, 44, 45, 46, and 48, A.B.&M. Block A. Subject tracts comprise a part of the lands described as 5475.12 acres in a deed from Terrell A. Braly, Trustee of the Braly Family Trust to Triad Land Investments, Ltd., dated September 9, 2021 and recorded in Document Number 20210000553 of the Official Public Records of Schleicher County, Texas.



Scale: 1" = 500'
bearings - GPS True North
Survey date: April-May, 2022

LEGEND

- set 1/2" iron stake
- found iron stake
- unmarked point
- ⊗ fence corner post
- boundary line
- - - - - fence

Line Table

LINE	BEARING	DISTANCE	LINE	BEARING	DISTANCE	LINE	BEARING	DISTANCE
L1	S8°04'E	47.61'	L27	S28°34'W	131.16'	L53	S73°59'E	160.09'
L2	S17°24'E	131.37'	L28	S43°41'W	121.63'	L54	S89°05'E	171.42'
L3	S34°55'E	88.04'	L29	S69°24'W	183.74'	L55	S71°47'W	121.23'
L4	N7°07'E	152.58'	L30	S38°56'W	162.75'	L56	S44°50'W	95.37'
L5	S75°34'E	87.57'	L31	N43°41'E	121.63'	L57	S29°13'W	106.71'
L6	S11°23'E	96.32'	L32	N28°34'E	131.16'	L58	S11°18'W	83.31'
L7	S5°01'E	148.89'	L33	S77°35'W	122.13'	L59	S28°25'E	105.77'
L8	S29°54'E	241.83'	L34	S7°06'W	112.37'	L60	S52°24'E	183.21'
L9	S12°52'E	138.19'	L35	N54°50'W	135.33'	L61	N48°24'E	205.27'
L10	S22°10'E	160.09'	L36	S78°37'E	201.08'	L62	S27°33'E	116.59'
L11	S22°10'E	121.52'	L37	S63°43'E	95.21'	L63	S5°21'E	134.82'
L12	S12°31'W	252.81'	L38	N85°39'E	201.05'	L64	S75°52'E	200.00'
L13	N73°39'W	123.28'	L39	S77°07'E	198.65'	L65	N21°08'E	97.24'
L14	N25°41'W	113.73'	L40	S77°07'E	289.96'	L66	N3°09'W	366.81'
L15	N31°11'W	101.81'	L41	N29°30'E	222.81'	L67	S83°52'E	169.39'
L16	N59°51'W	248.70'	L42	N63°16'E	163.41'	L68	N79°27'E	127.56'
L17	N59°01'W	148.18'	L43	N21°15'E	101.27'	L69	N79°30'E	189.36'
L18	S73°36'W	176.98'	L44	N50°16'E	279.06'	L70	S73°17'E	109.96'
L19	N86°50'W	219.70'	L45	S48°27'W	98.54'	L71	S70°41'E	257.84'
L20	S56°57'W	181.46'	L46	S17°15'E	70.78'	L72	N84°44'E	175.83'
L21	S25°56'W	98.57'	L47	N89°05'W	171.42'	L73	S70°01'E	146.18'
L22	S27°49'E	267.03'	L48	N73°59'W	160.09'	L74	S58°51'E	248.70'
L23	S1°01'E	90.25'	L49	N43°08'W	142.09'	L75	S31°11'E	101.81'
L24	S1°01'E	101.04'	L50	N60°38'W	141.79'	L76	S25°41'E	113.73'
L25	S11°52'W	71.16'	L51	S60°38'E	141.79'	L77	S73°39'E	123.28'
L26	N5°16'E	244.50'	L52	S43°08'E	142.09'	L78	S43°20'E	147.78'