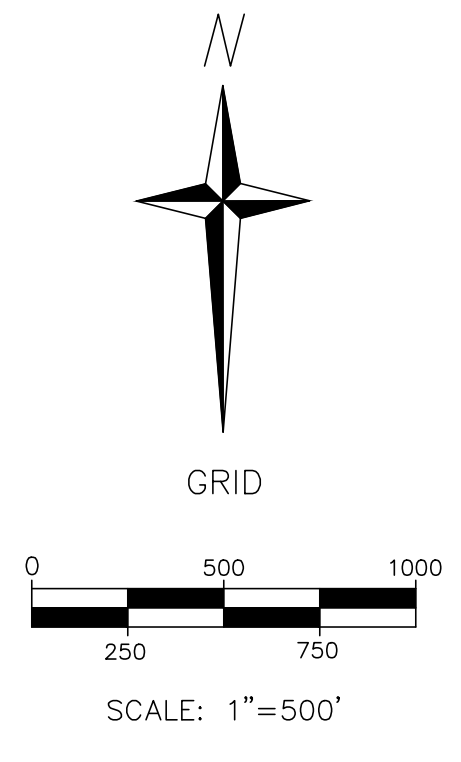
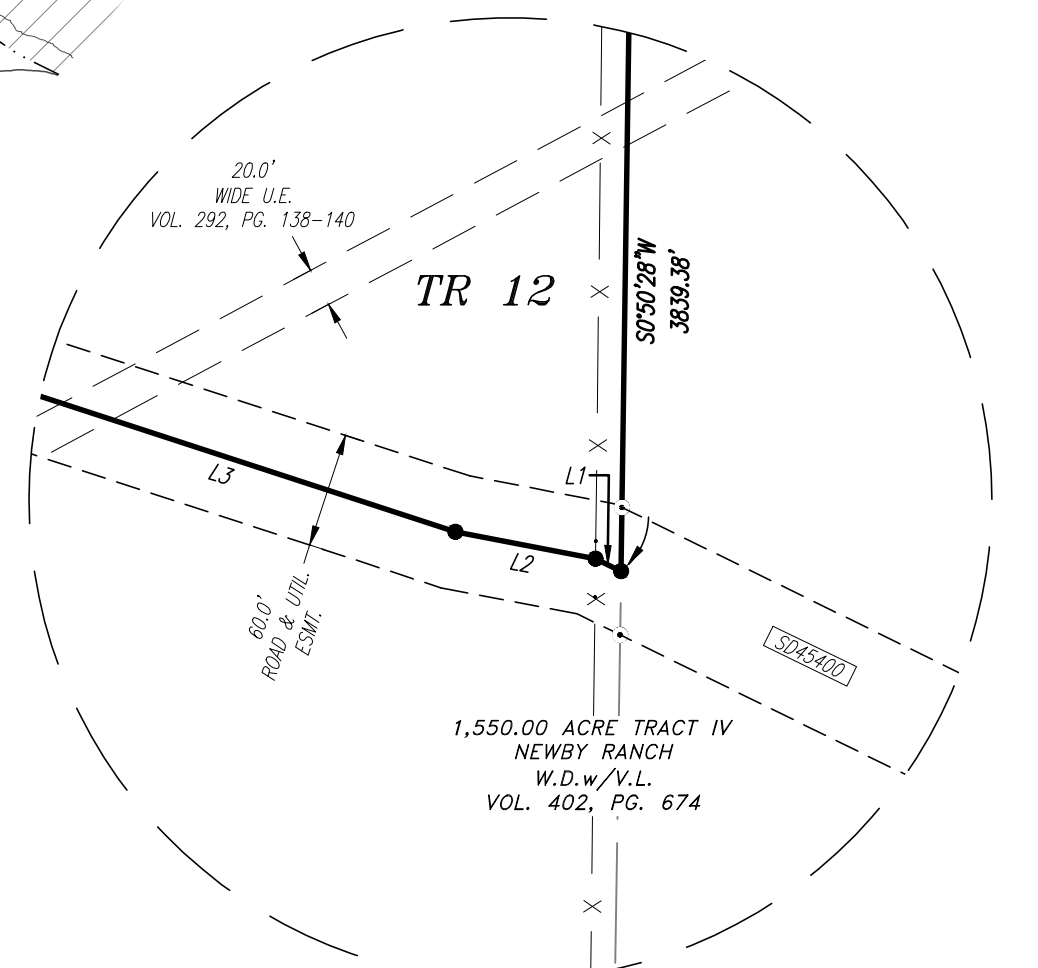
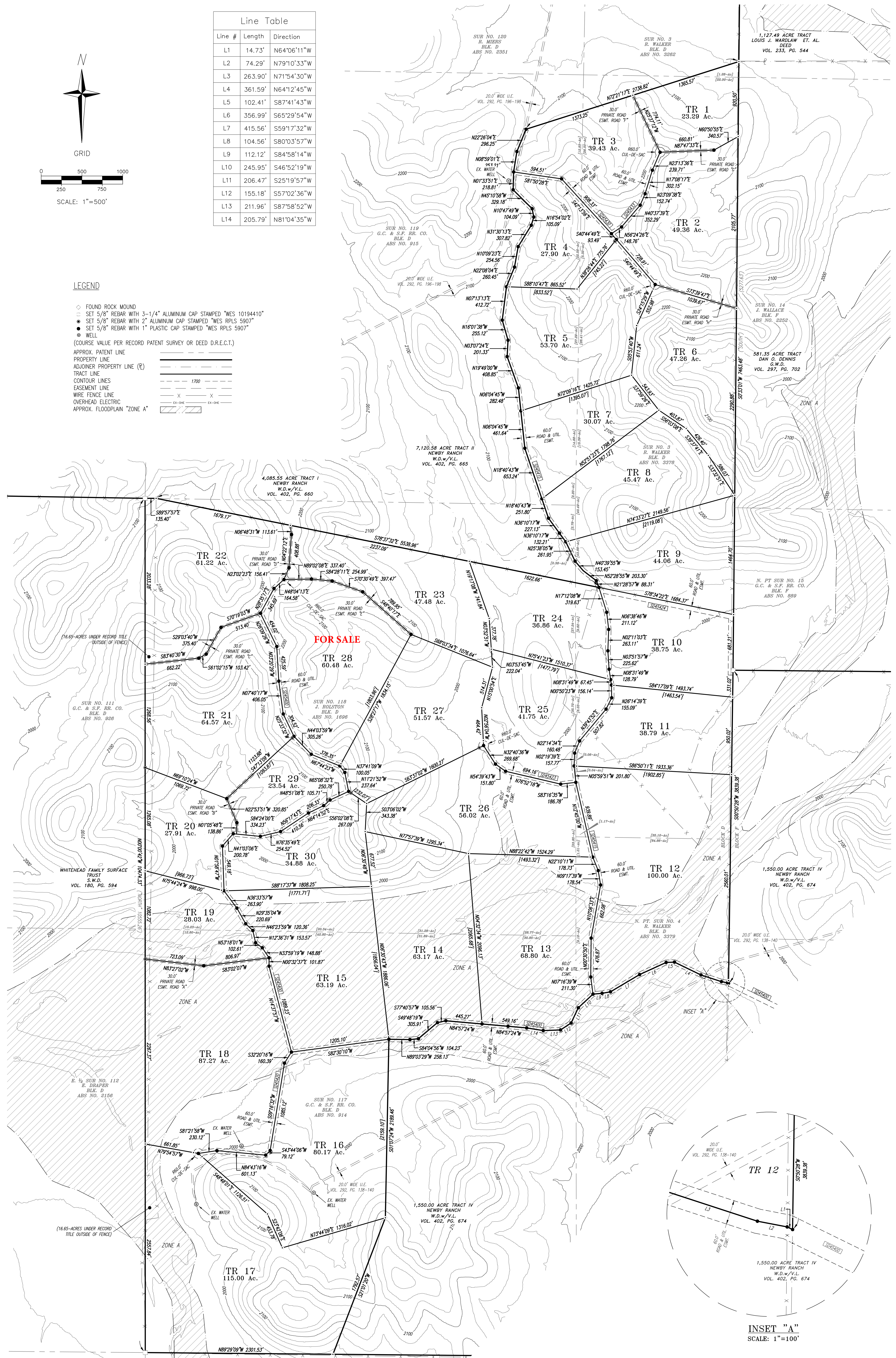


Line #	Length	Direction
L1	14.73'	N64°06'11"W
L2	74.29'	N79°10'33"W
L3	263.90'	N71°54'30"W
L4	361.59'	N64°12'45"W
L5	102.41'	S87°41'43"W
L6	356.99'	S65°29'54"W
L7	415.56'	S59°17'32"W
L8	104.56'	S80°03'57"W
L9	112.12'	S84°58'14"W
L10	245.95'	S46°52'19"W
L11	206.47'	S25°19'57"W
L12	155.18'	S57°02'36"W
L13	211.96'	S87°58'52"W
L14	205.79'	N81°04'35"W



**LEGEND**

- FOUND ROCK MOUND
  - SET 5/8" REBAR WITH 3-1/4" ALUMINUM CAP STAMPED "WES 10194410"
  - SET 5/8" REBAR WITH 2" ALUMINUM CAP STAMPED "WES RPLS 5907"
  - SET 5/8" REBAR WITH 1" PLASTIC CAP STAMPED "WES RPLS 5907"
  - WELL
- (COURSE VALUE PER RECORD PATENT SURVEY OR DEED D.R.E.C.T.)
- APPROX. PATENT LINE
  - PROPERTY LINE
  - ADJOINER PROPERTY LINE (P)
  - TRACT LINE
  - CONTOUR LINES
  - EASEMENT LINE
  - WIRE FENCE LINE
  - OVERHEAD ELECTRIC
  - APPROX. FLOODPLAIN "ZONE A"



**INSET "A"**  
SCALE: 1"=100'

631 WATER STREET KERRVILLE, TX 75028 830-217-7100		wellbornengineering.com FRM# 10194410 T.B.P.E.L.S.	
PROJECT: WES-21-31	SCALE: 1"=500'	FIELD: J5/BM	DRAFTING: J5M
LAST FIELD VISIT: 05.26.2021		SHEET NO. 3 of 3	
LAST DRAFT REVISION: 05.26.2021		CHECKED: RSM	



SUR. NO. 113  
G.C. & S.F. RR. CO.  
BLK. D  
ABS. NO. 912

SUR. NO. 118  
S. VETTMAN  
BLK. D  
ABS. NO. 2047

WHITEHEAD FAMILY SURFACE TRUST  
S.W.D.  
VOL. 160, PG. 594