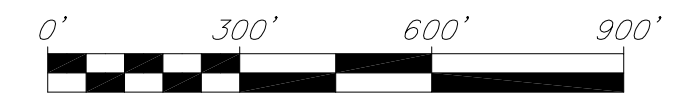




NORTH

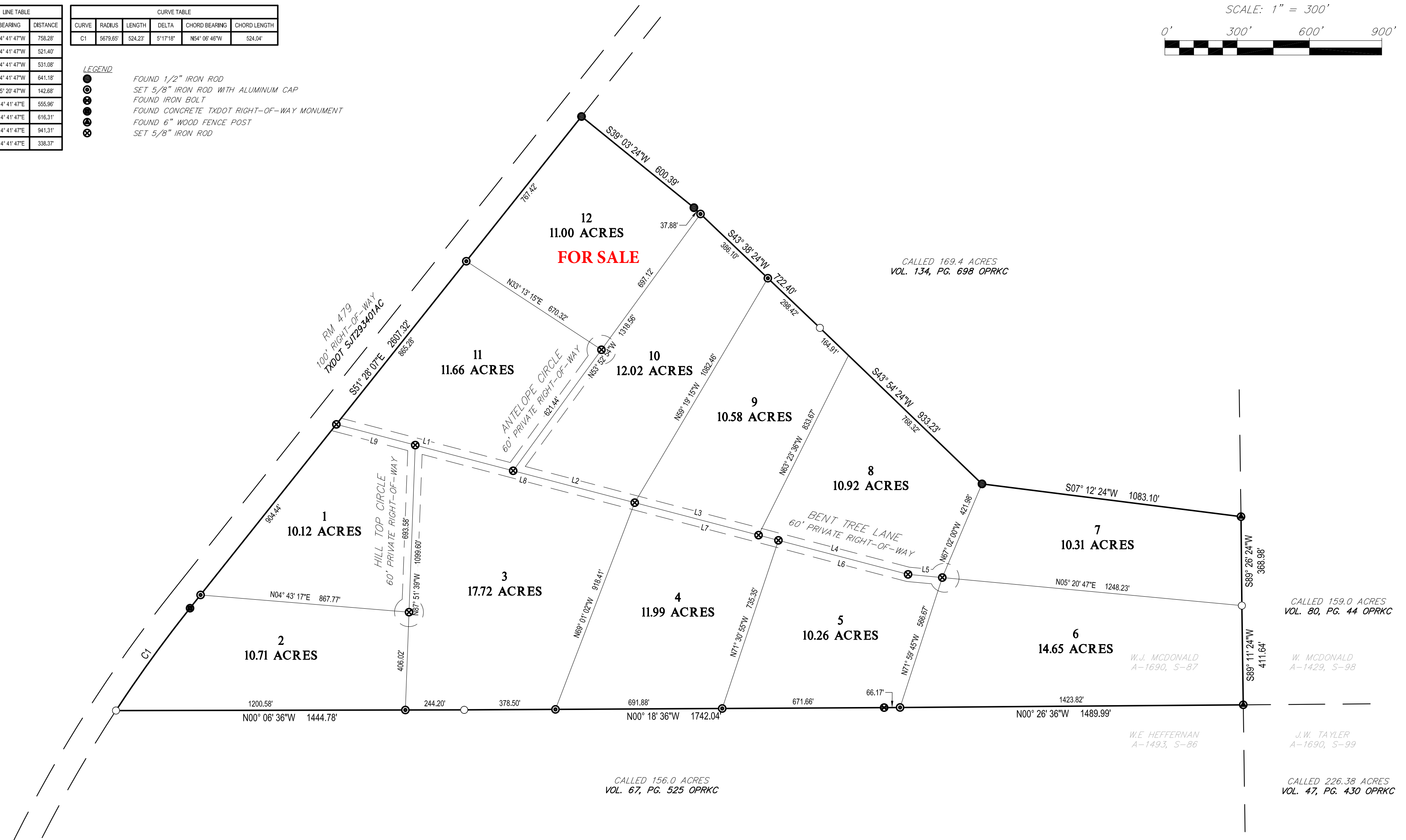
SCALE: 1" = 300'



LINE TABLE			CURVE TABLE					
LINE	BEARING	DISTANCE	CURVE	RADIUS	LENGTH	DELTA	CHORD BEARING	CHORD LENGTH
L1	S14° 41' 47"W	758.28'	C1	5679.65'	524.23'	5° 17' 18"	N54° 06' 46"W	524.04'
L2	S14° 41' 47"W	521.40'						
L3	S14° 41' 47"W	531.08'						
L4	S14° 41' 47"W	641.18'						
L5	S95° 20' 47"W	142.68'						
L6	N14° 41' 47"E	555.96'						
L7	N14° 41' 47"E	616.31'						
L8	N14° 41' 47"E	941.31'						
L9	N14° 41' 47"E	338.37'						

LEGEND

- FOUND 1/2" IRON ROD
- SET 5/8" IRON ROD WITH ALUMINUM CAP
- ⊙ FOUND IRON BOLT
- ⊙ FOUND CONCRETE TXDOT RIGHT-OF-WAY MONUMENT
- ⊙ FOUND 6" WOOD FENCE POST
- ⊙ SET 5/8" IRON ROD



**PLAT ESTABLISHING
BENT TREE RANCH SUBDIVISION**

COMPRISING 141.94 ACRES OF LAND, MORE OR LESS,
OUT W.J. MCDONALD(G.H.&S.A. RY. CO, BLOCK N)
SURVEY NO. 87, ABSTRACT NO. 1637, IN KIMBLE
COUNTY, TEXAS; BEING ALL THAT CERTAIN 141.92
ACRE TRACT OF LAND RECORDED UNDER PUBLIC
CLERK'S FILE NUMBER 55778, OFFICIAL PUBLIC
RECORDS OF KIMBLE COUNTY, TEXAS.
JULY 2020

**MDS LAND SURVEYING
COMPANY, INC.**

ALTA | BOUNDARY | CONSTRUCTION | OIL & GAS | TOPOGRAPHIC

TEXAS BOARD OF PROFESSIONAL LAND SURVEYING FIRM REGISTRATION No. 10019600
7298 SIDNEY BAKER • KERRVILLE, TX 78028 • 830-816-1818